

Behsan

PUMP & MOTOR

کمپرسور بهسان

کارخانه : کیلومتر ۱۷ جاده قدیم کرج ، کمر بندی شهریار
اندیشه شهرک صنعتی زاگرس ، خیابان صنعت ، پلاک ۵
تلفن : ۰۲۱-۴۶۸۵۳۱۱۱-۳ فاکس : ۰۲۱-۴۶۸۵۳۱۱۳

www.Behsanair.com

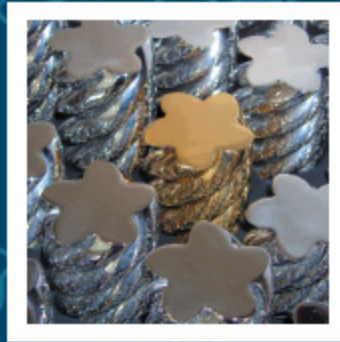
Ebrahimi@behsanair.com



TM. C. S.p.A. Termomeccanica Compressori

SCA

SCREW COMPRESSORS FOR AIR

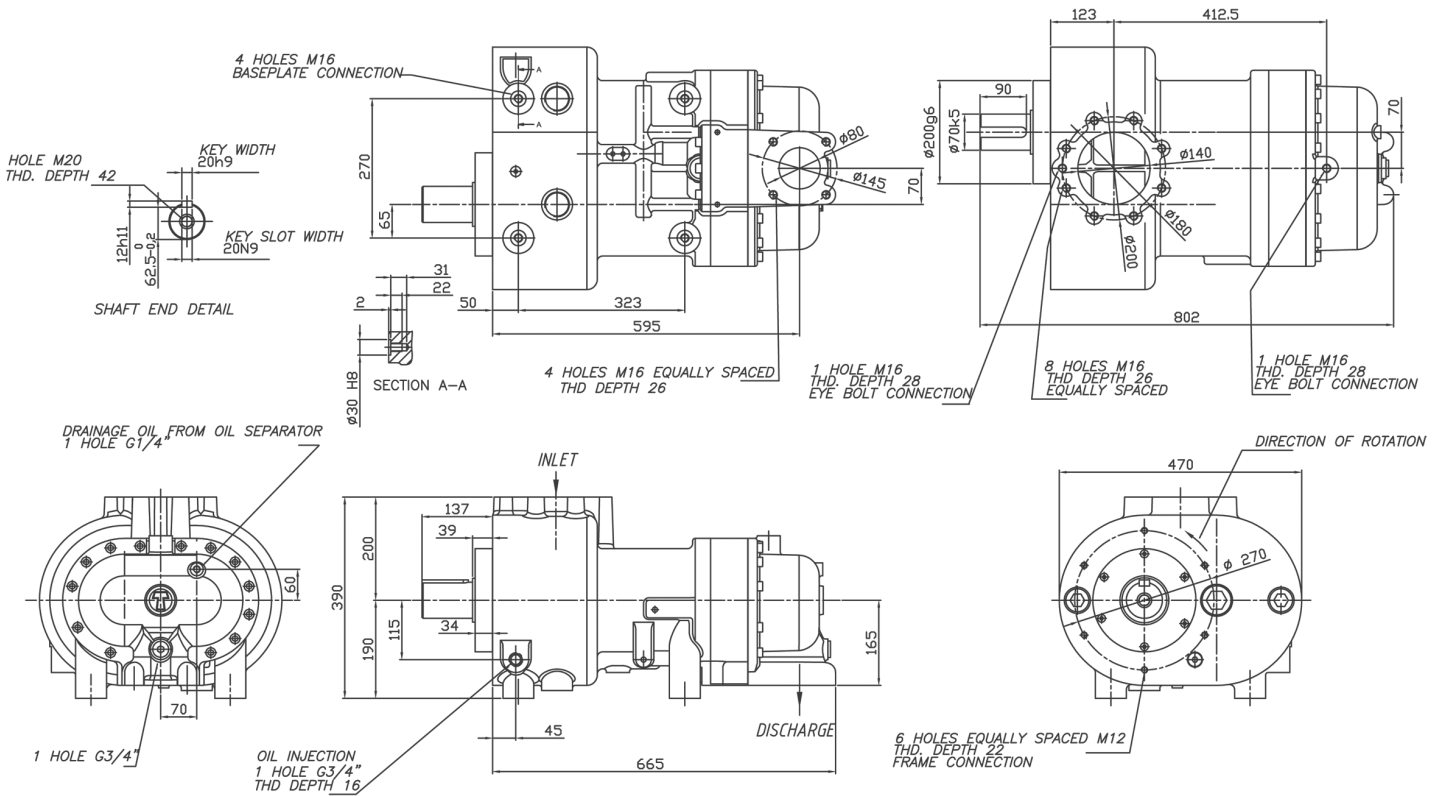


oil injected screw compressor for air



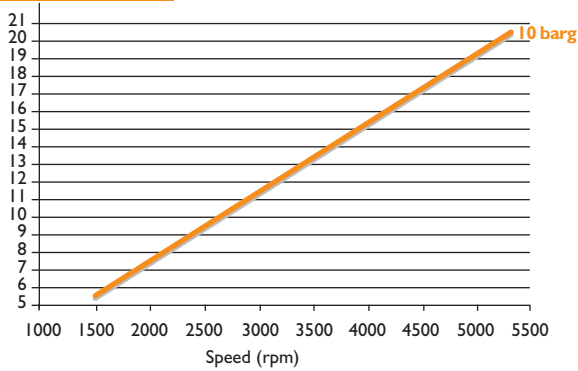
SCA19D-R

Outside view drawing

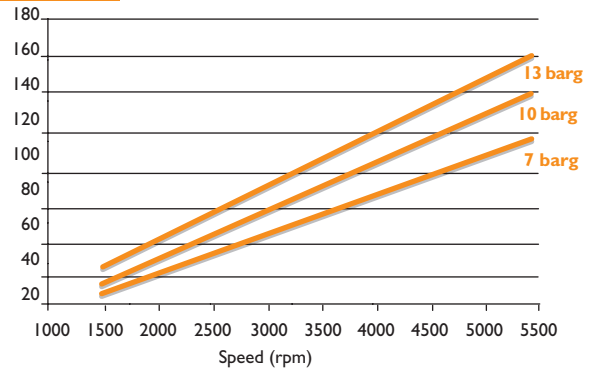


Data Tables

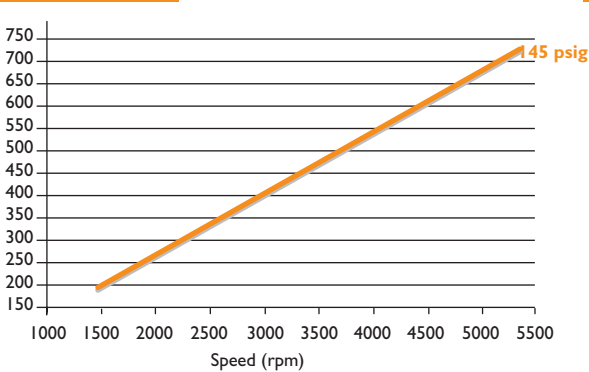
Air Capacity (m³/min)



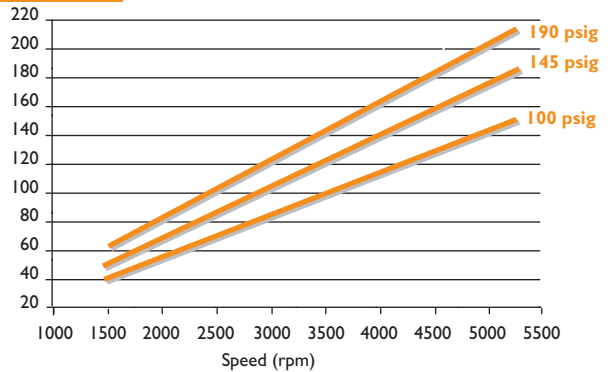
Power (kW)



Air Capacity (cfm)



Power (HP)



Drive: Male

Female rotor size: 169,7 mm

Working pressure: min 3 barg/40 psig - max 15 barg/220 psig

Lobe combination: 6/8

L/D: 2

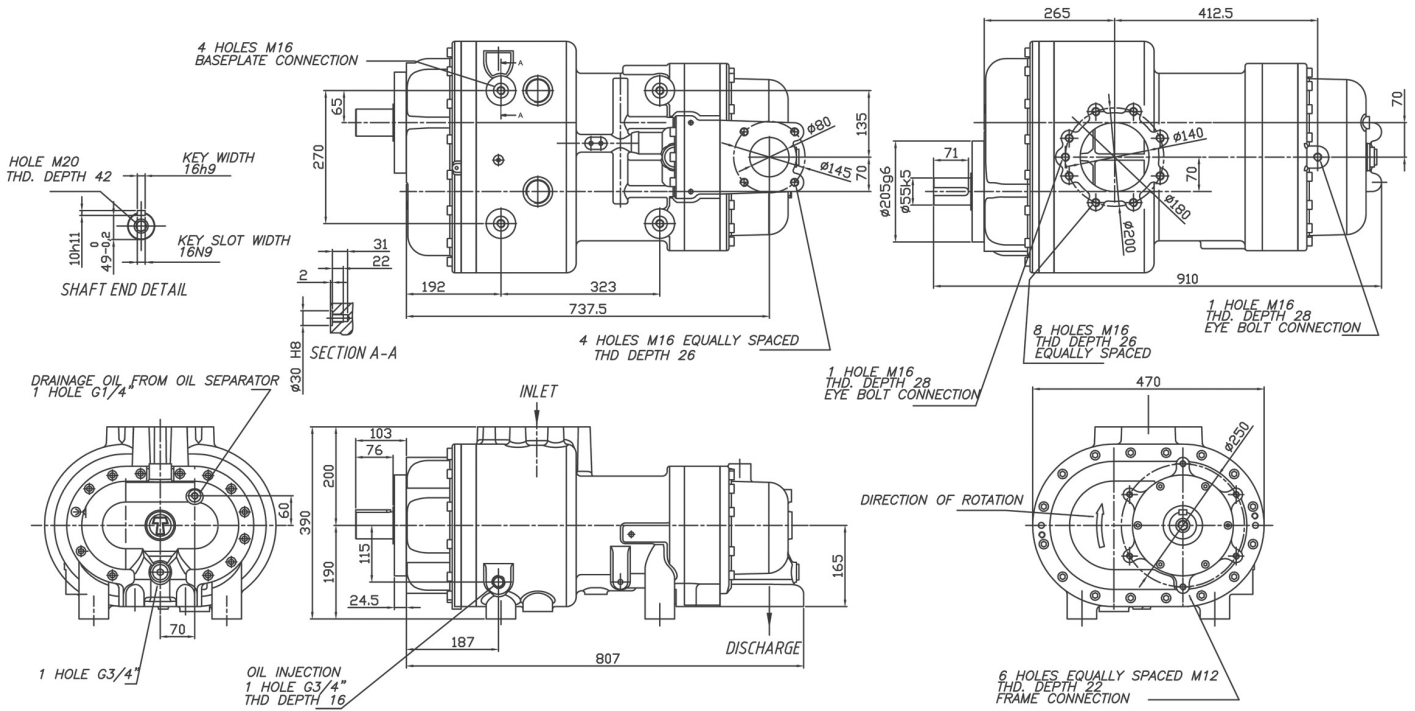
Weight: 280 kg - 617 lbs

Male rotor size: 169,7 mm



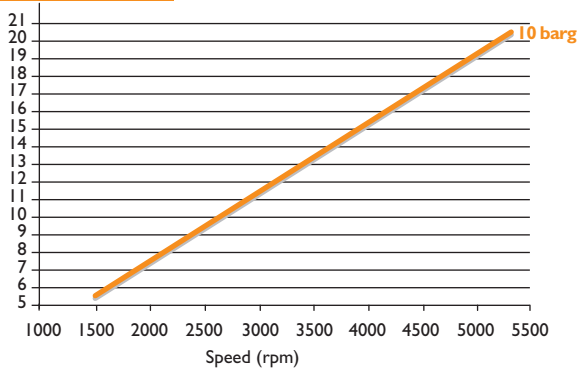
SCA19G-R

Outside view drawing

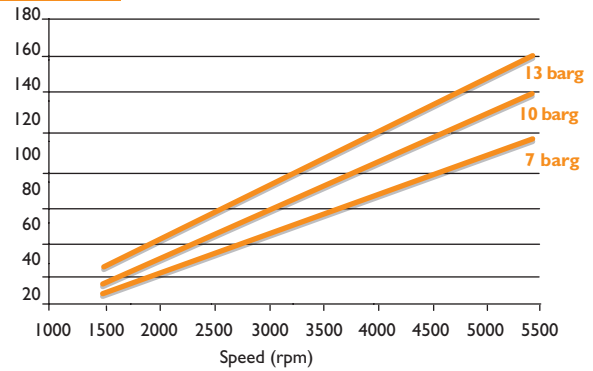


Data Tables

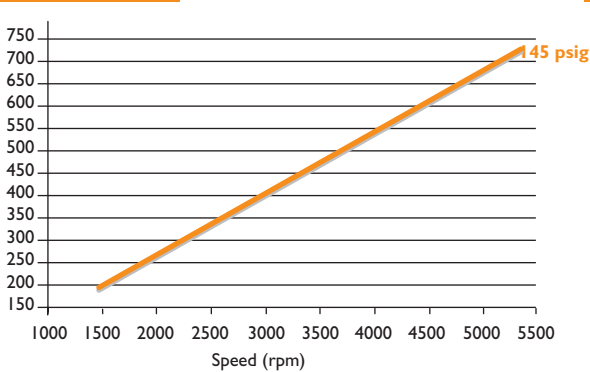
Air Capacity (m³/min)



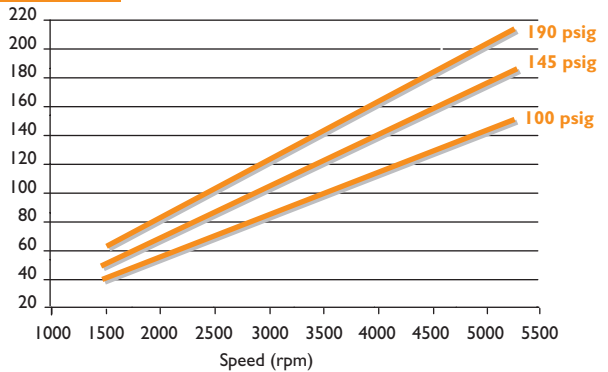
Power (kW)



Air Capacity (cfm)



Power (HP)



Drive: Male

Female rotor size: 169,7 mm

Working pressure: min 3 barg/40 psig - max 15 barg/220 psig

Lobe combination: 6/8

L/D: 2

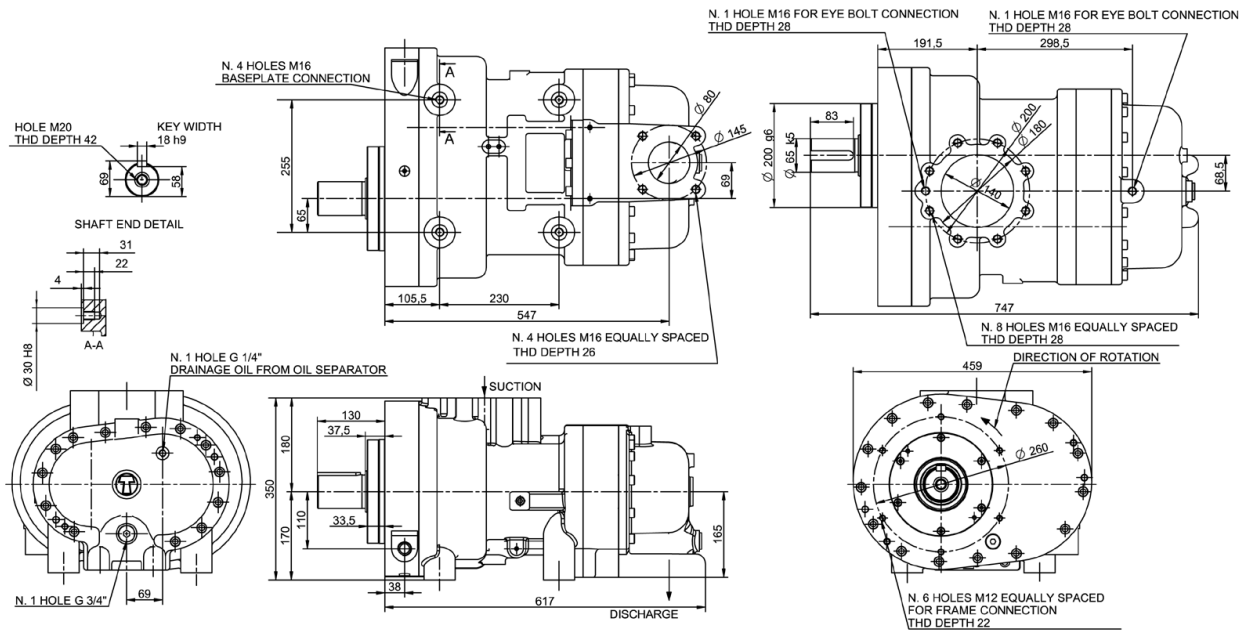
Weight: 350 kg - 772 lbs

Male rotor size: 169,7 mm



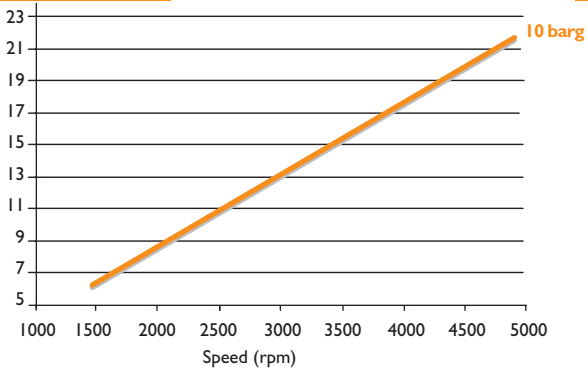
SCA20D-R

Outside view drawing

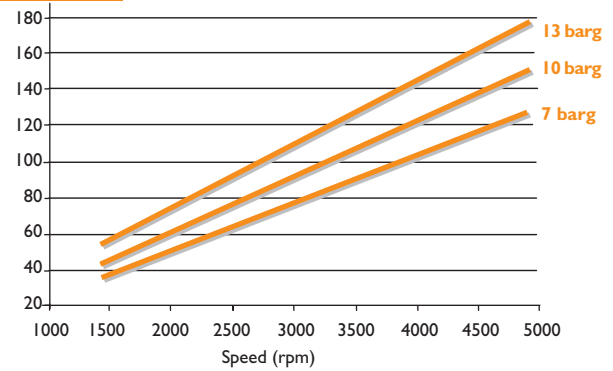


Data Tables

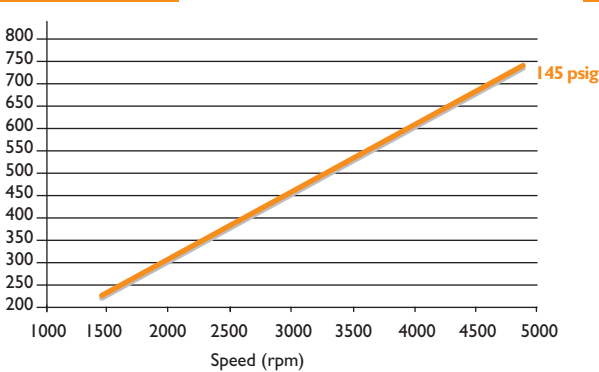
Air Capacity (m³/min)



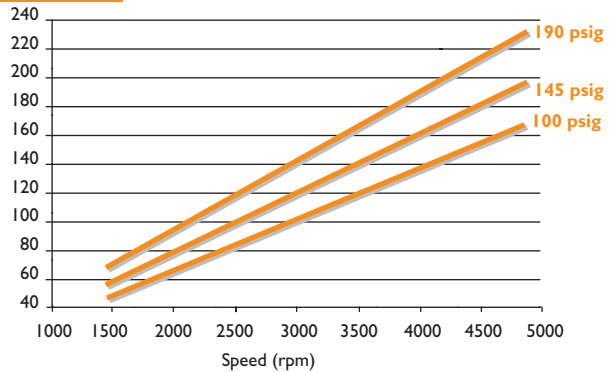
Power (kW)



Air Capacity (cfm)



Power (HP)



Drive: Male

Female rotor size: 154,8 mm

Working pressure: min 3 barg/40 psig - max 15 barg/220 psig

Lobe combination: 5/6

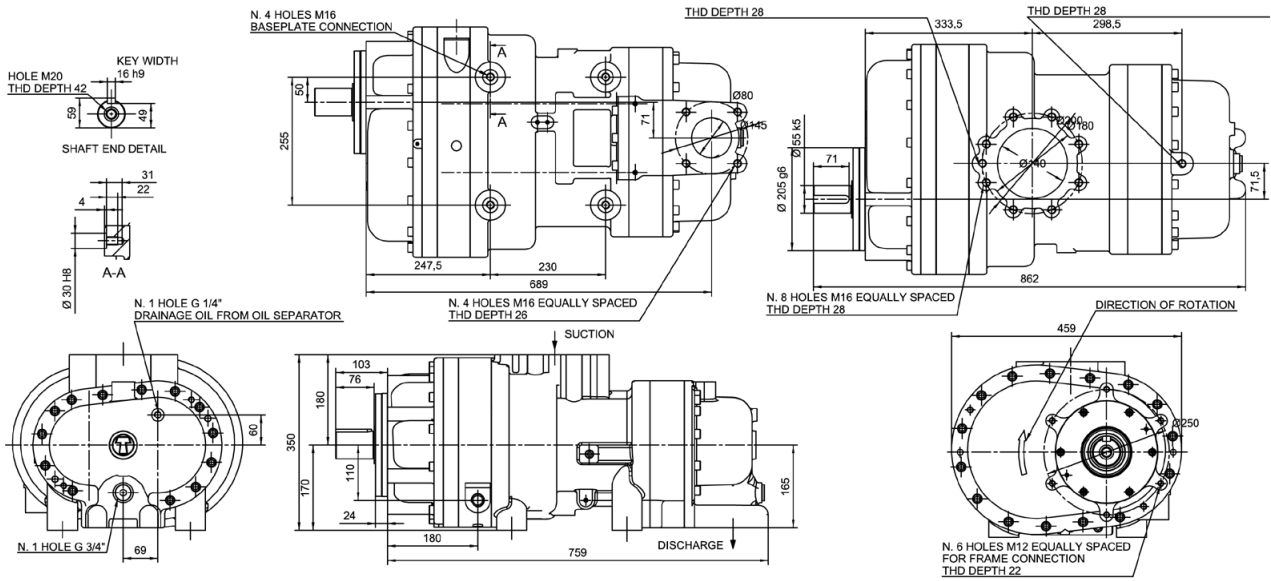
L/D: 1,70

Weight: 263 kg - 580 lbs

Male rotor size: 186 mm

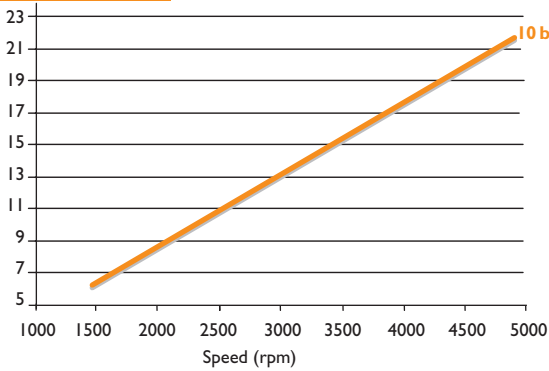


Outside view drawing

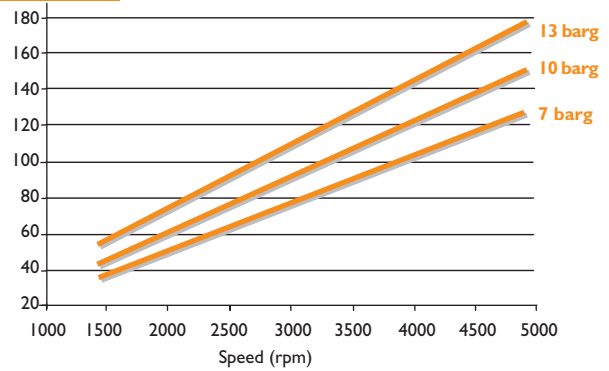


Data Tables

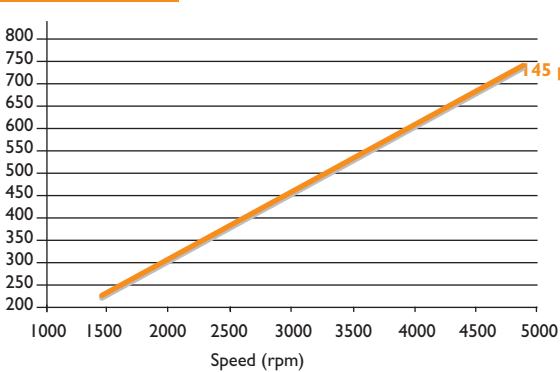
Air Capacity (m³/min)



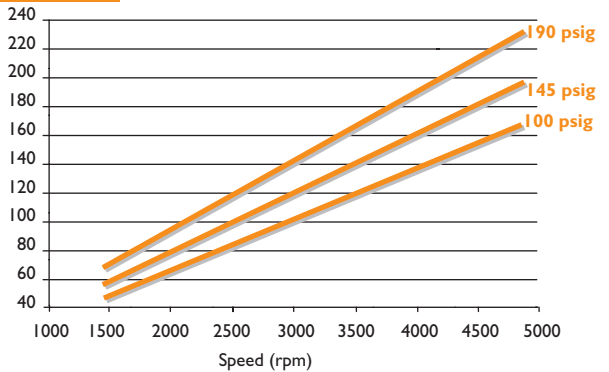
Power (kW)



Air Capacity (cfm)



Power (HP)



Drive: Male

Female rotor size: 154,8 mm

Working pressure: min 3 barg/40 psig - max 15 barg/220 psig

Lobe combination: 5/6

L/D: 1,70

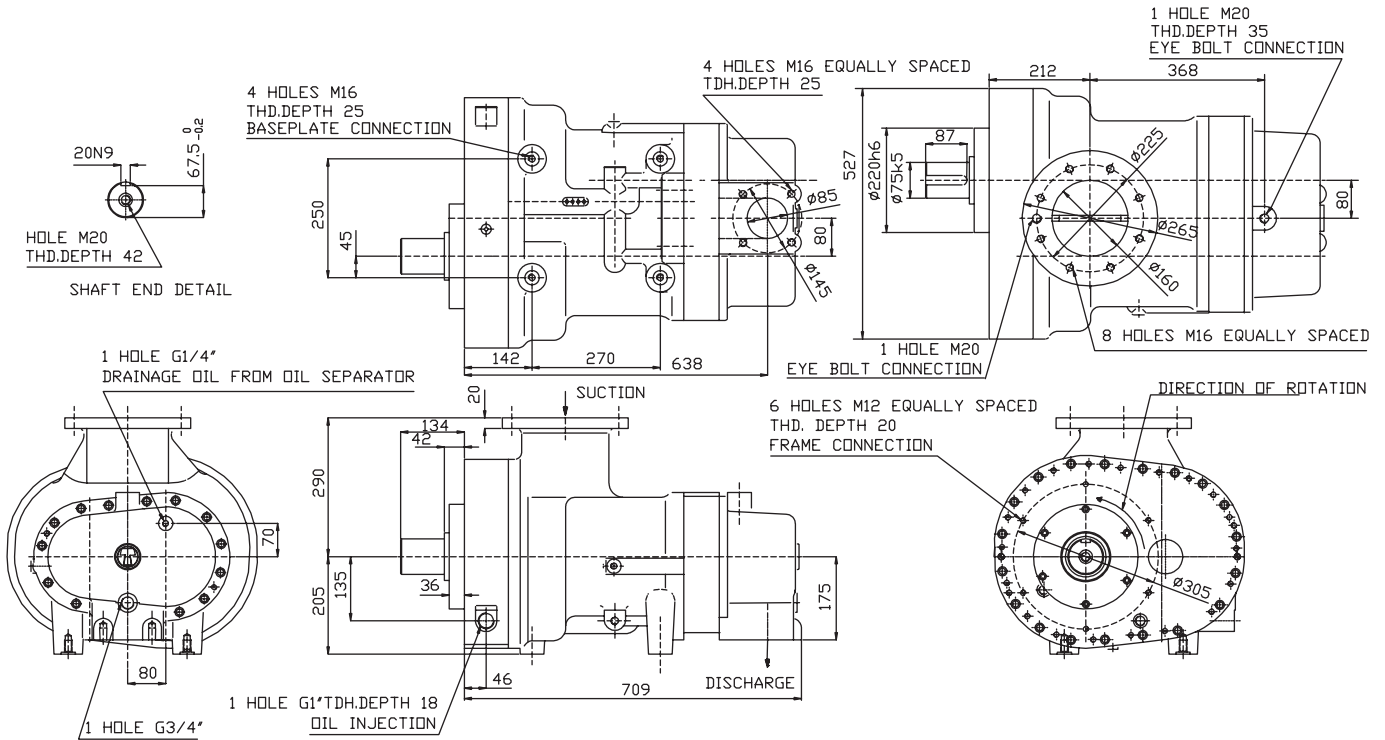
Weight: 320 kg - 705 lbs

Male rotor size: 186 mm



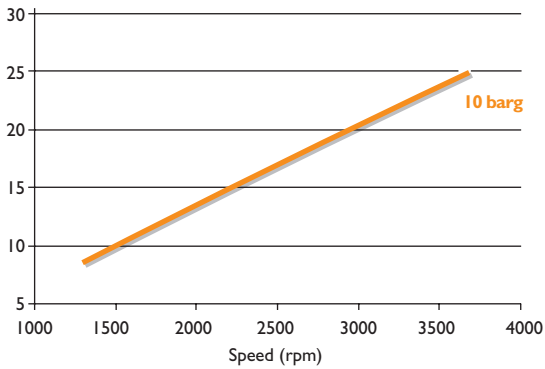
SCA22D-R

Outside view drawing

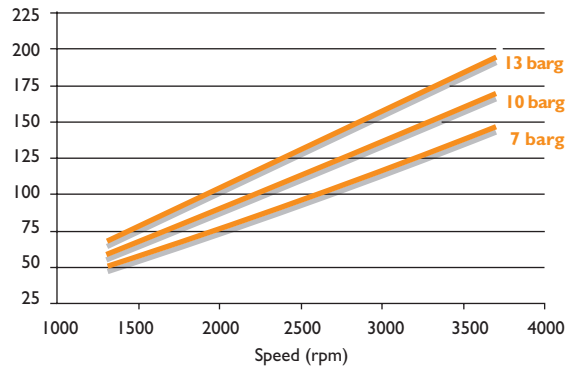


Data Tables

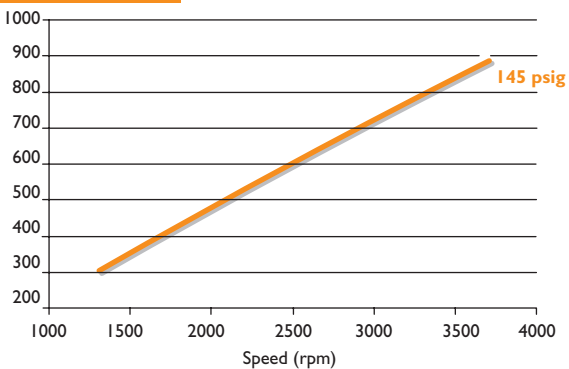
Air Capacity (m³/min)



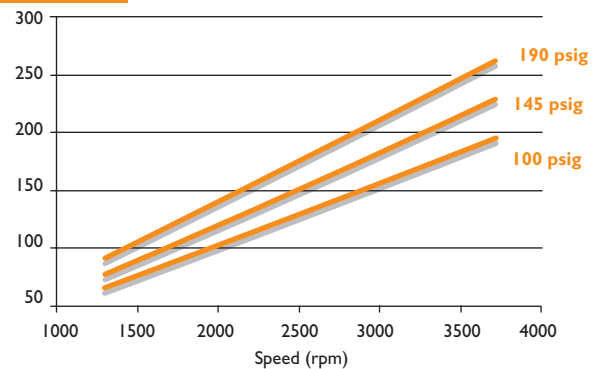
Power (kW)



Air Capacity (cfm)



Power (HP)



Drive: Male

Female rotor size: 183 mm

Working pressure: min 3 barg/40 psig - max 15 barg/220 psig

Lobe combination: 5/6

L/D: 1,70

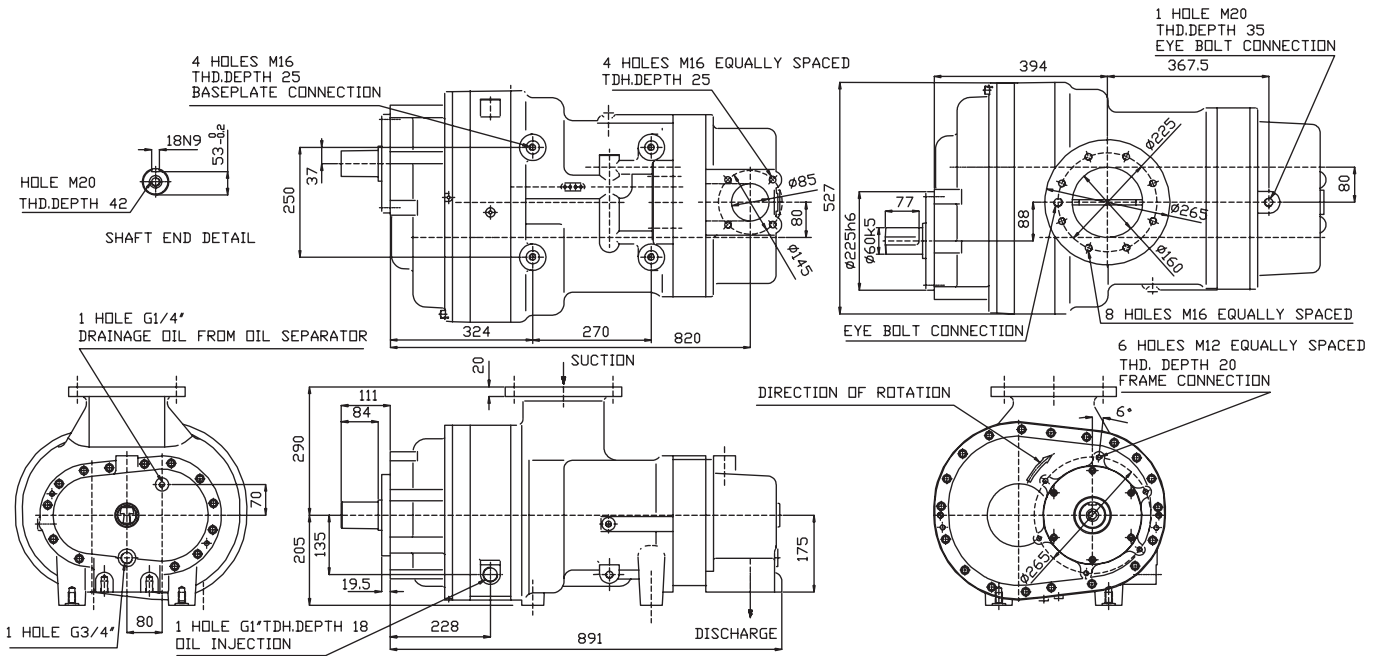
Weight: 393 kg - 866 lbs

Male rotor size: 217 mm



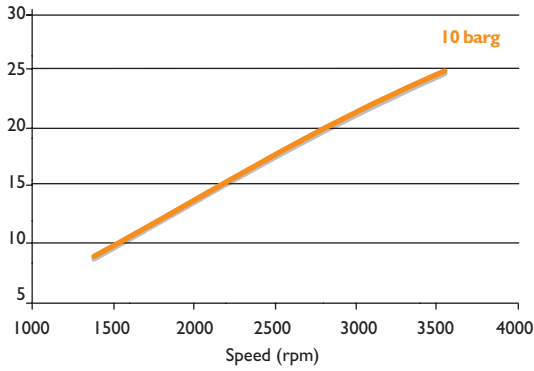
SCA22G-R

Outside view drawing

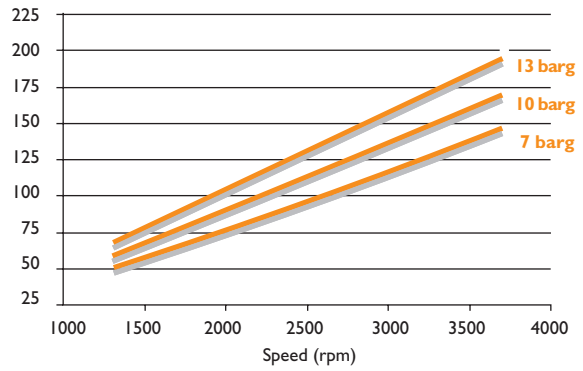


Data Tables

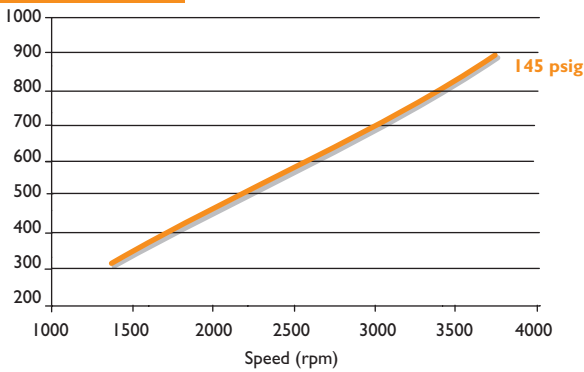
Air Capacity (m³/min)



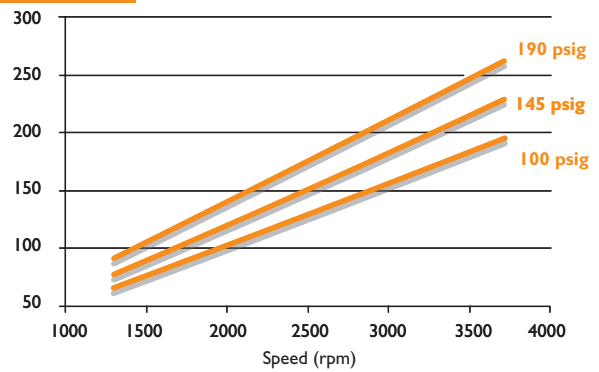
Power (kW)



Air Capacity (cfm)



Power (HP)



Drive: Male
 Lobe combination: 5/6
 Male rotor size: 217 mm

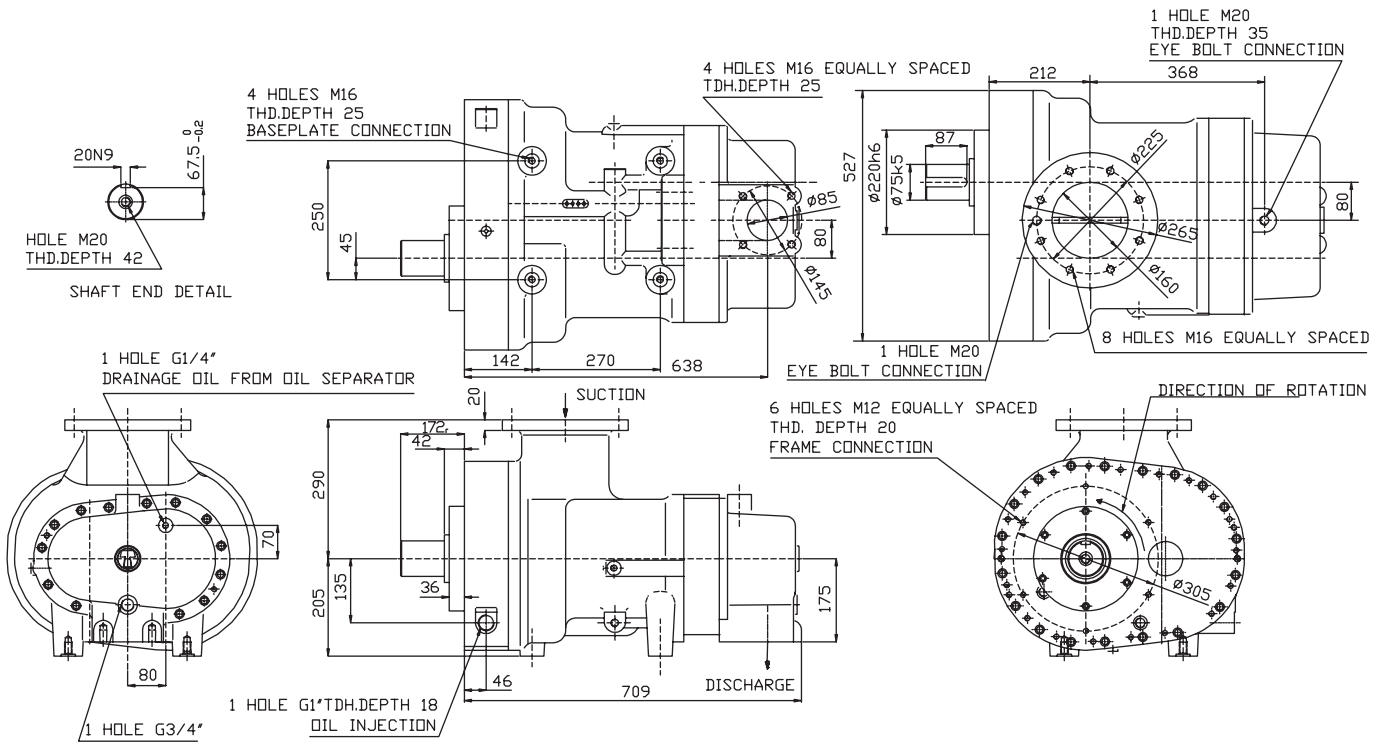
Female rotor size: 183 mm
 L/D: 1,70

Working pressure: min 3 barg/40 psig - max 15 barg/220 psig
 Weight: 490 kg - 1080 lbs



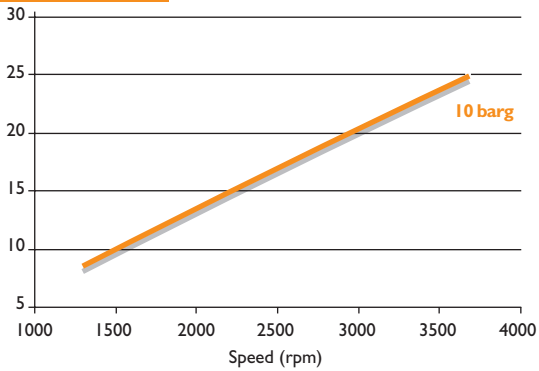
SCA22B-R

Outside view drawing

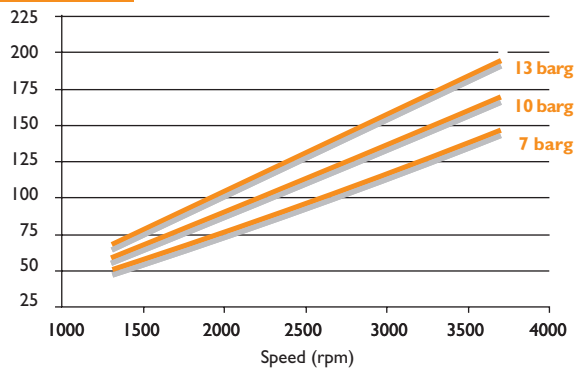


Data Tables

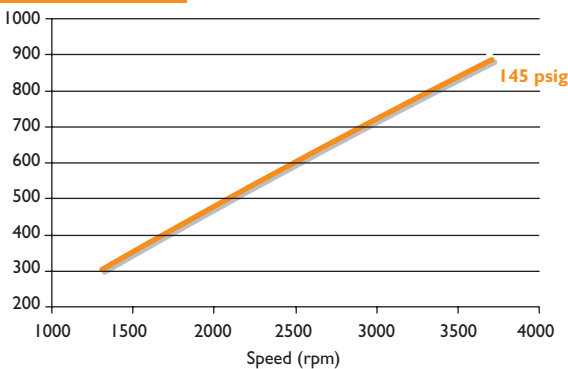
Air Capacity (m³/min)



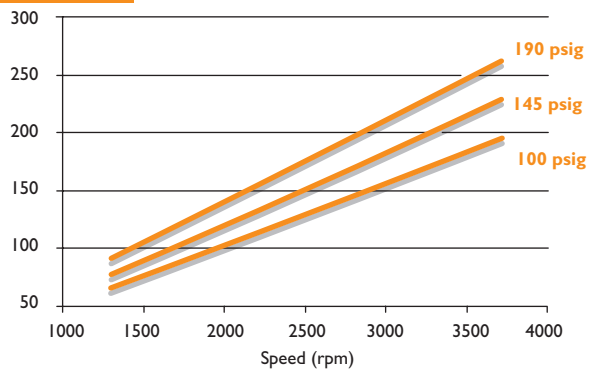
Power (kW)



Air Capacity (cfm)



Power (HP)



Drive: Male

Female rotor size: 183 mm

Working pressure: min 3 barg/40 psig - max 15 barg/220 psig

Lobe combination: 5/6

L/D: 1,70

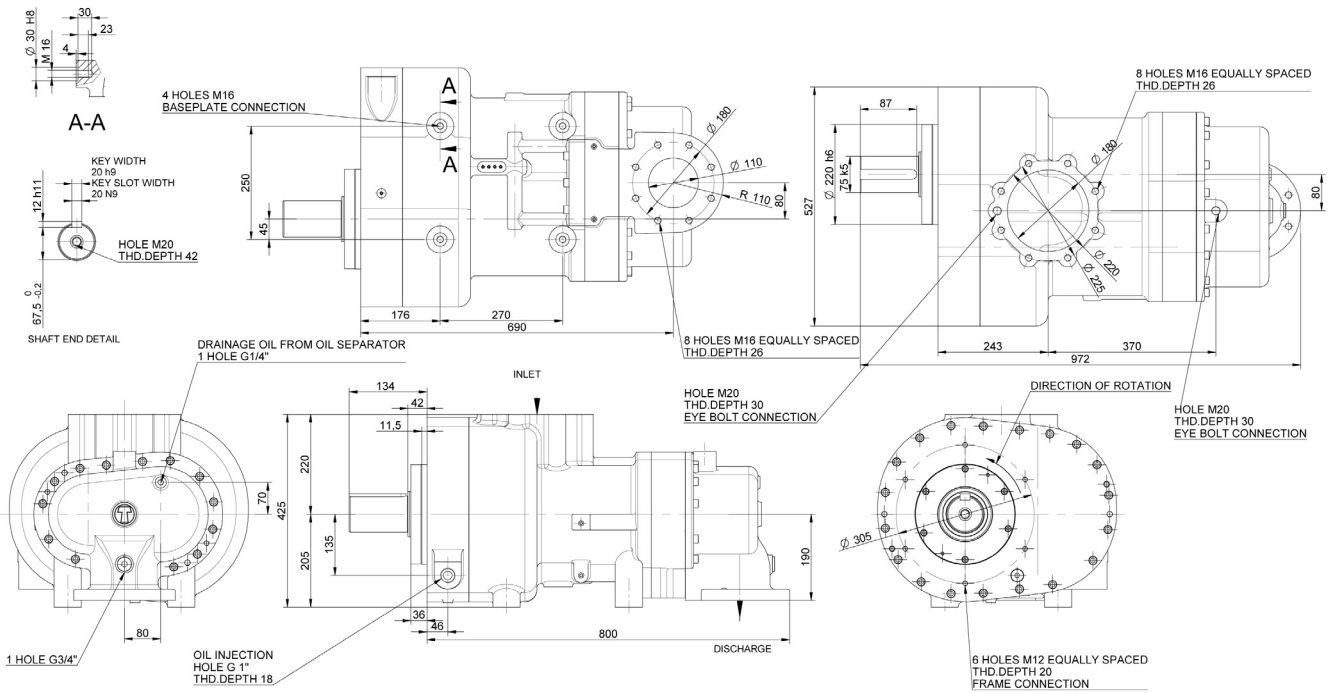
Weight: 397 kg - 866 lbs

Male rotor size: 217 mm



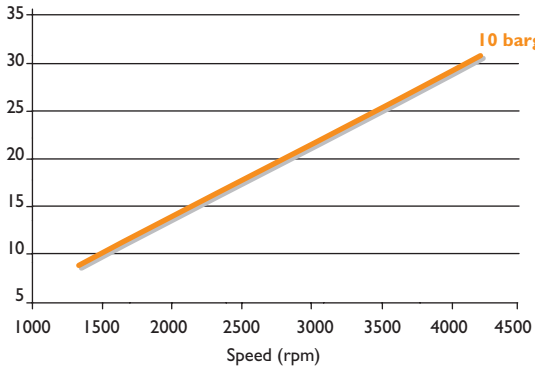
SCA25D-R

Outside view drawing

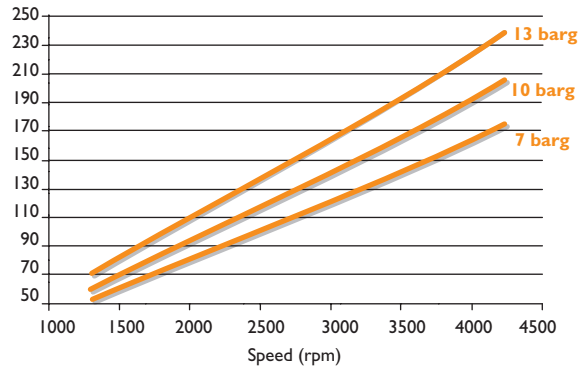


Data Tables

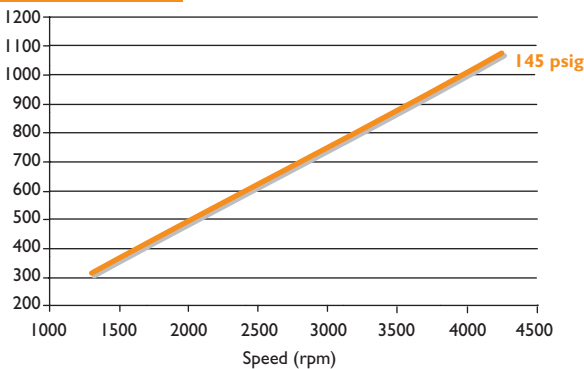
Air Capacity (m³/min)



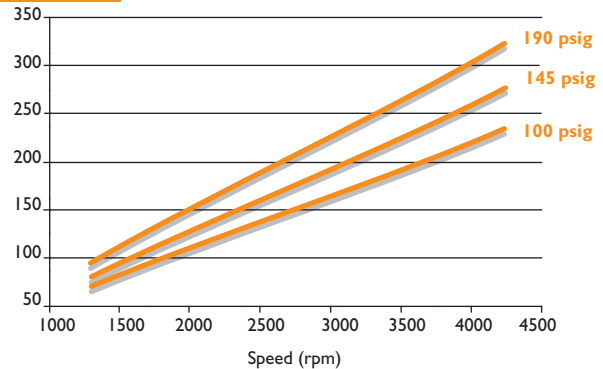
Power (kW)



Air Capacity (cfm)



Power (HP)



Drive: Male

Female rotor size: 183 mm

Working pressure: min 3 barg/40 psig - max 15 barg/220 psig

Lobe combination: 5/6

L/D: 1,85

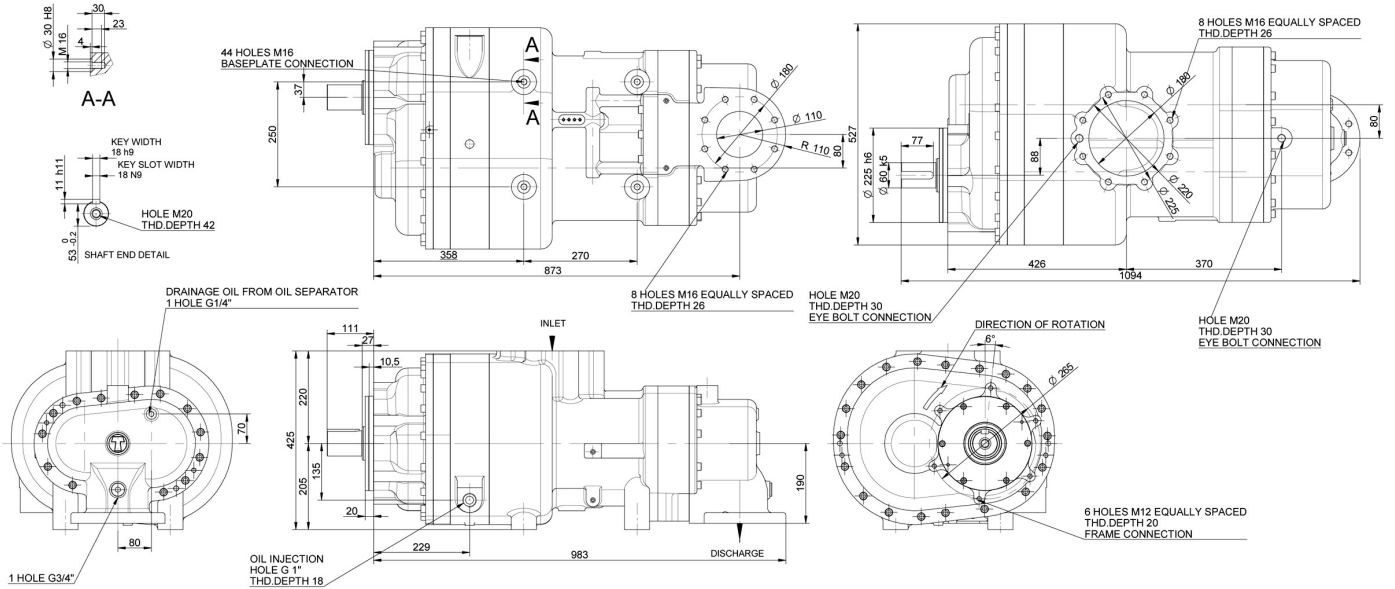
Weight: 429 kg - 945 lbs

Male rotor size: 217 mm



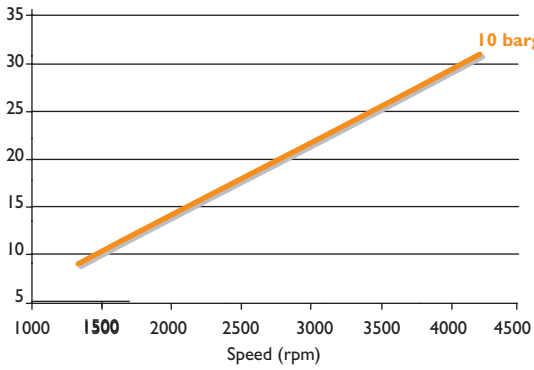
SCA25G-R

Outside view drawing

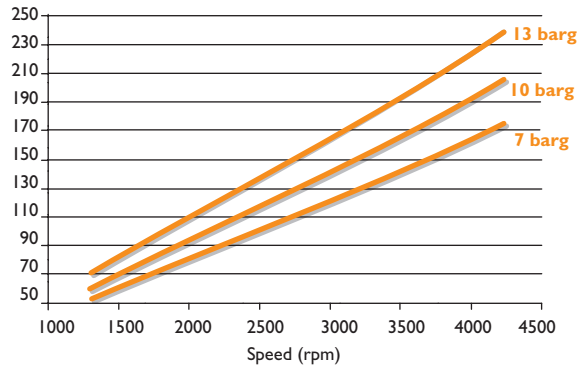


Data Tables

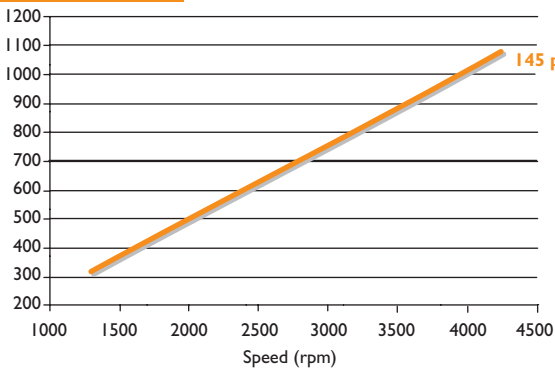
Air Capacity (m³/min)



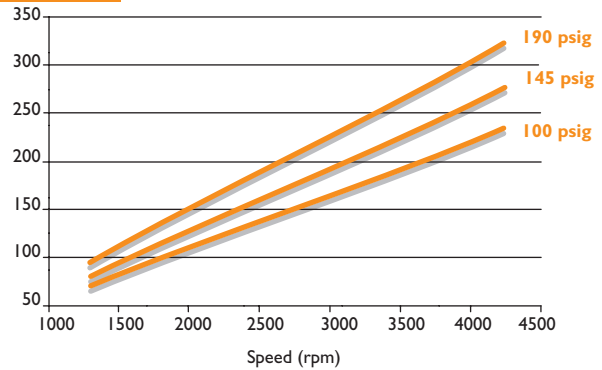
Power (kW)



Air Capacity (cfm)



Power (HP)



Drive: Male

Female rotor size: 183 mm

Working pressure: min 3 barg/40 psig - max 15 barg/220 psig

Lobe combination: 5/6

L/D: 1,85

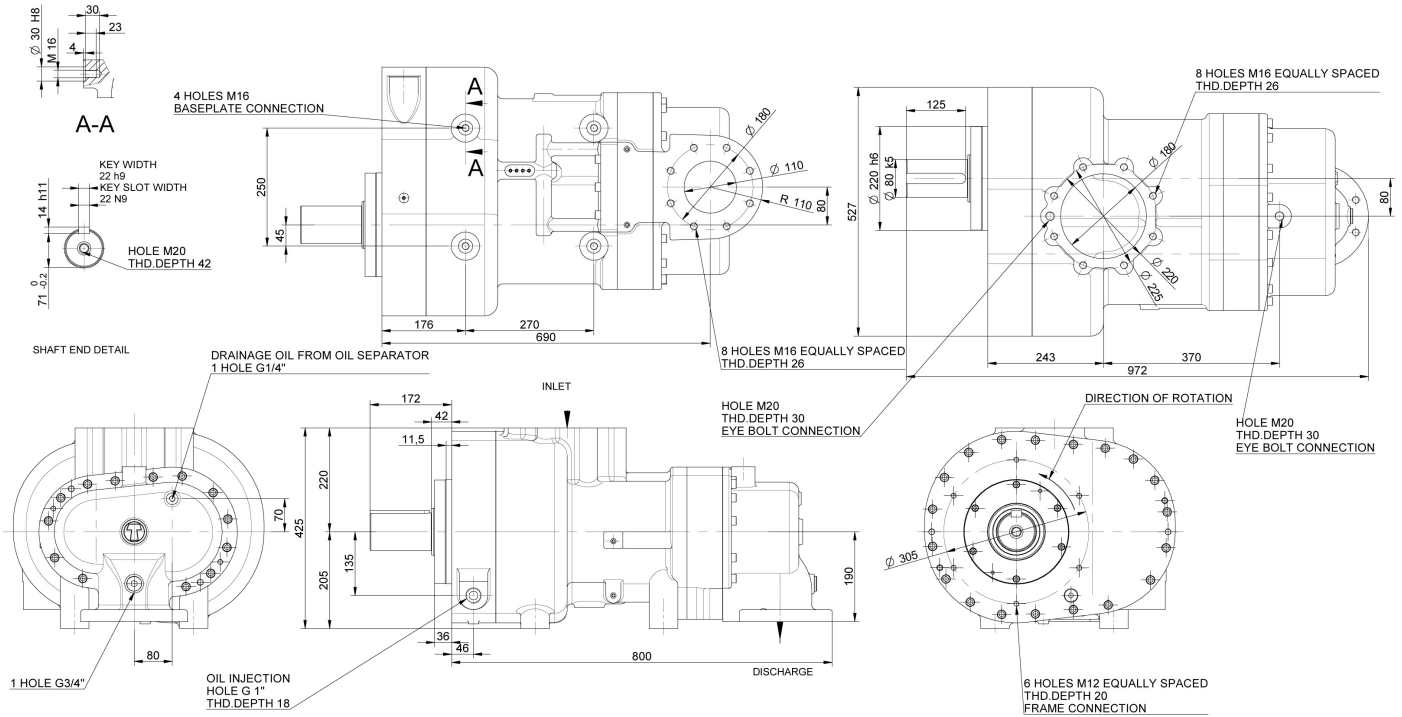
Weight: 526 kg - 1159 lbs

Male rotor size: 217 mm



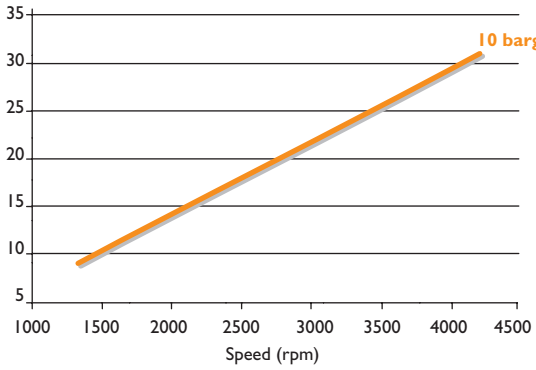
SCA25B-R

Outside view drawing

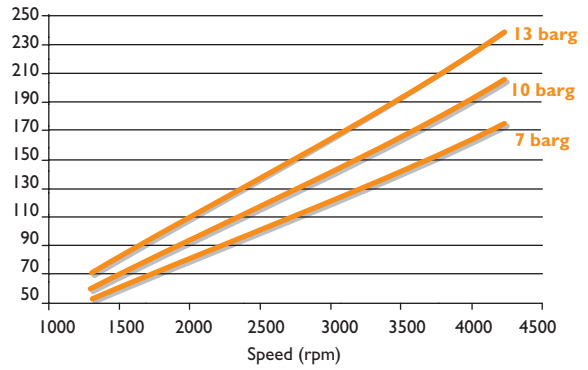


Data Tables

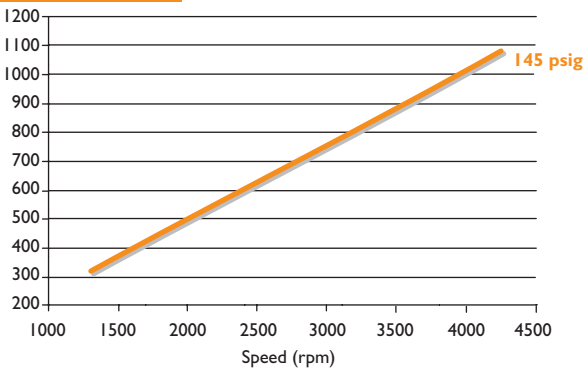
Air Capacity (m³/min)



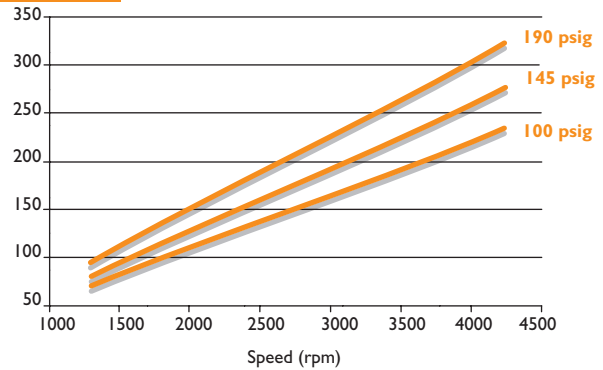
Power (kW)



Air Capacity (cfm)



Power (HP)



Drive: Male

Female rotor size: 183 mm

Working pressure: min 3 barg/40 psig - max 15 barg/220 psig

Lobe combination: 5/6

L/D: 1,85

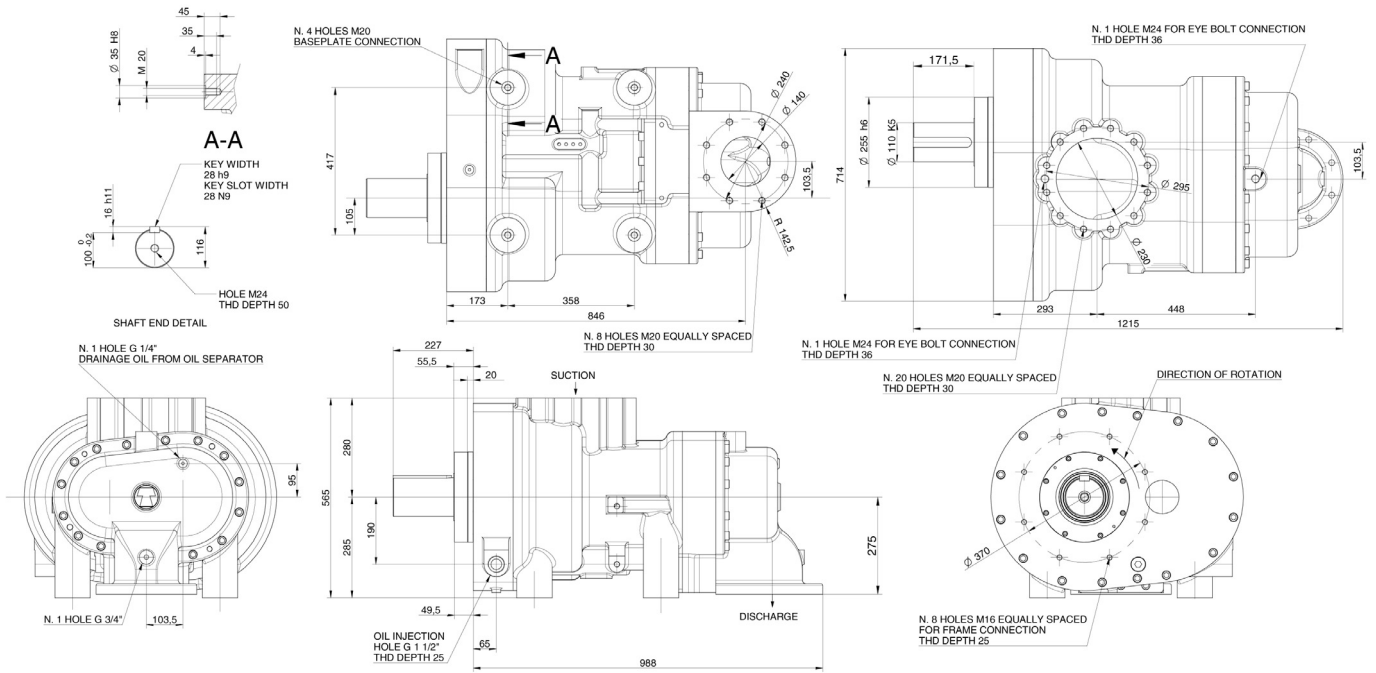
Weight: 433 kg - 954 lbs

Male rotor size: 217 mm



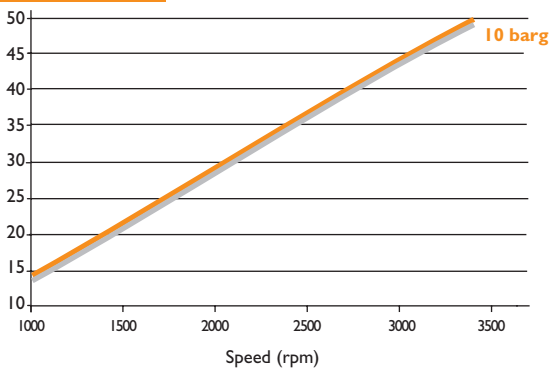
SCA30 D-R

Outside view drawing

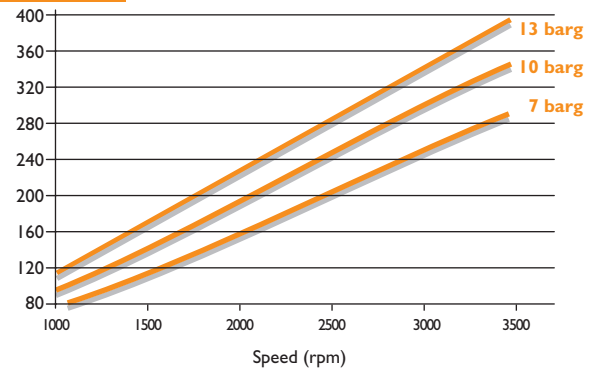


Data Tables

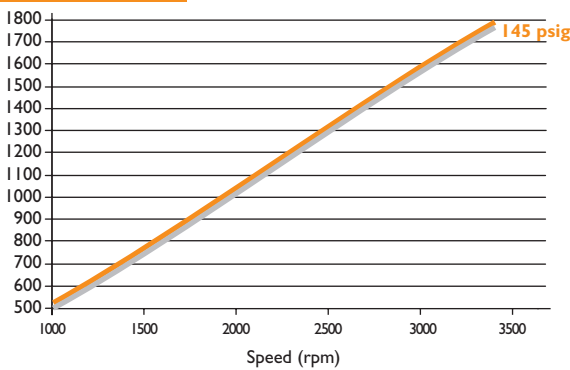
Air Capacity (m³/min)



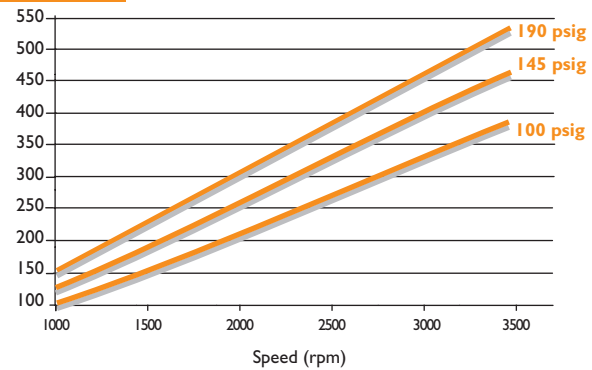
Power (kW)



Air Capacity (cfm)



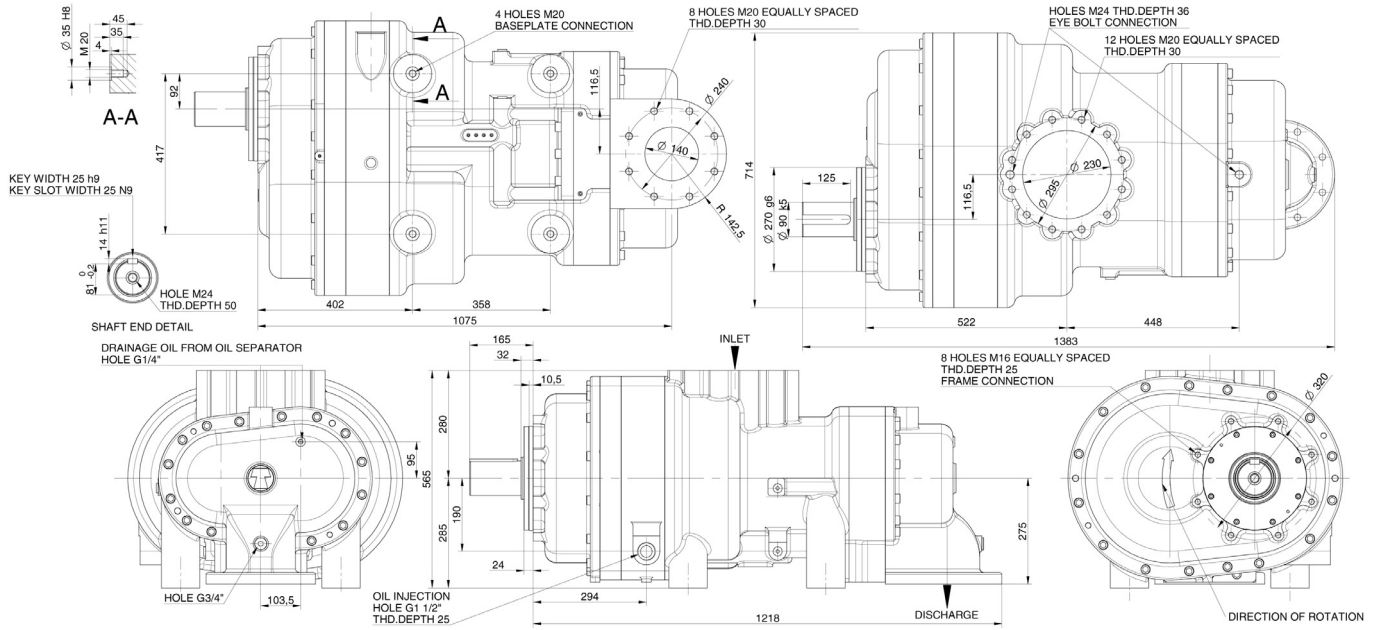
Power (HP)



Drive: Male	Female rotor size: 233,9 mm	Working pressure: min 3 barg/40 psig - max 15 barg/220 psig
Lobe combination: 5/6	L/D: 1,70	Weight: 862 kg - 1900 lbs
Male rotor size: 281 mm		

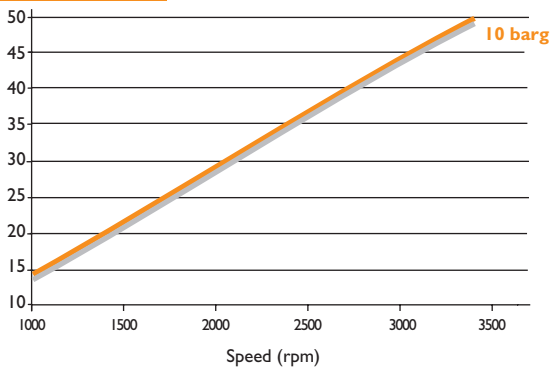


Outside view drawing

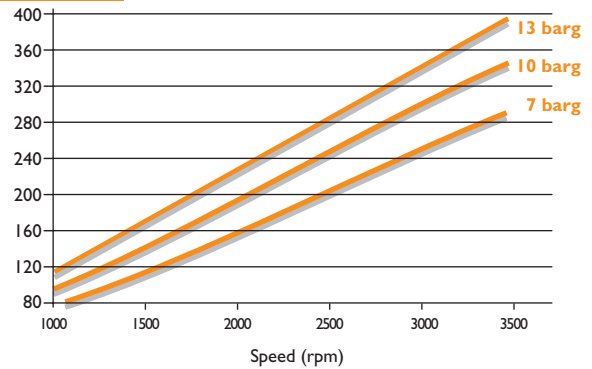


Data Tables

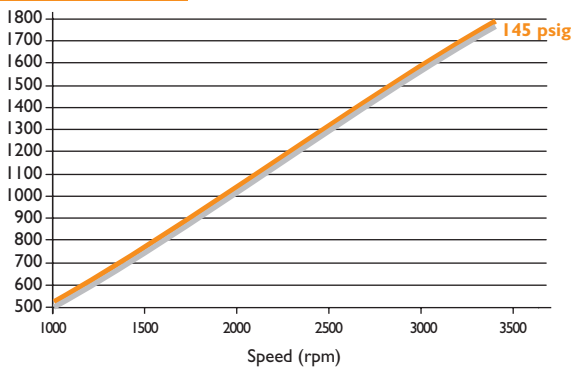
Air Capacity (m³/min)



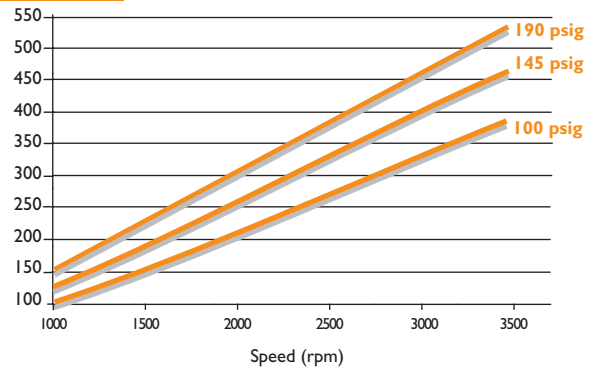
Power (kW)



Air Capacity (cfm)



Power (HP)



Drive: Male

Female rotor size: 233,9 mm

Working pressure: min 3 barg/40 psig - max 15 barg/220 psig

Lobe combination: 5/6

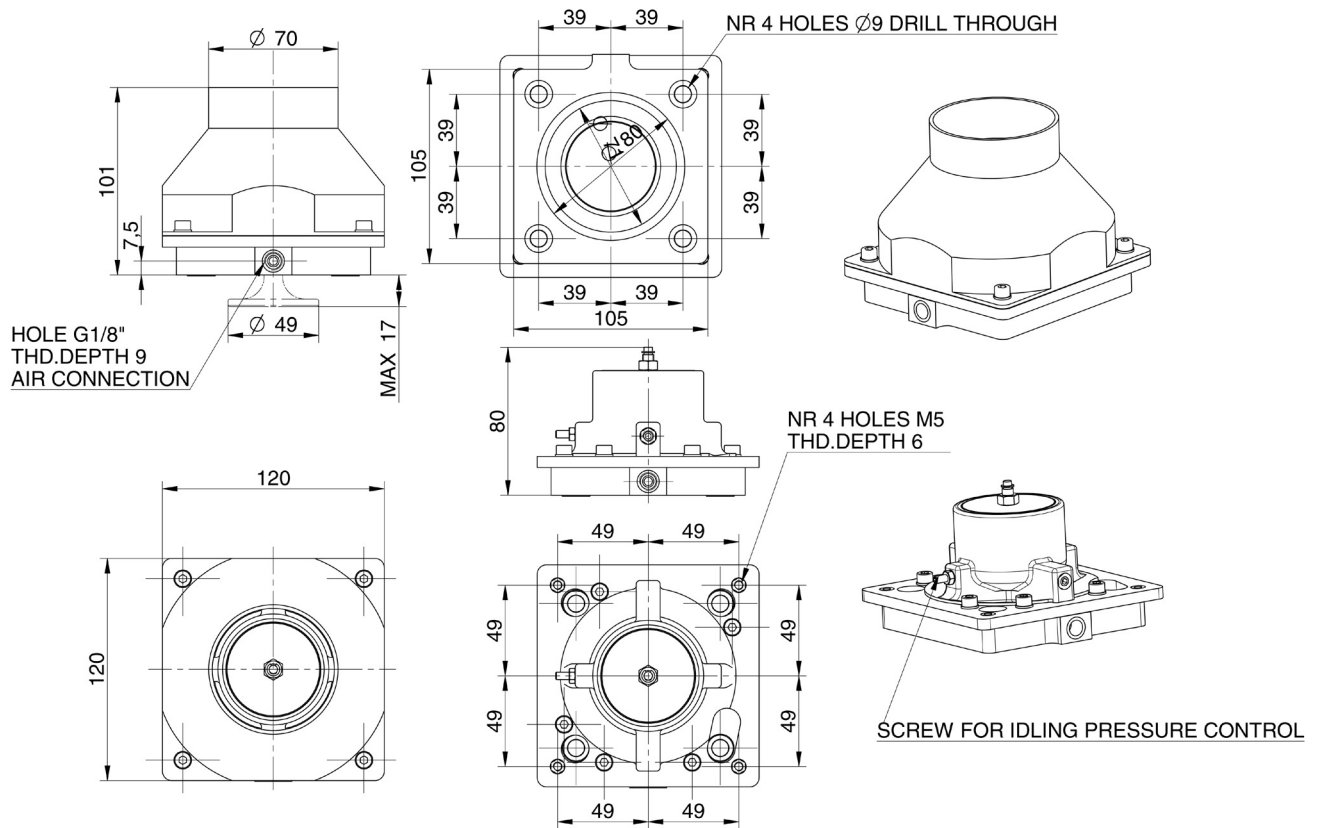
L/D: 1,70

Weight: 1095 kg - 2414 lbs

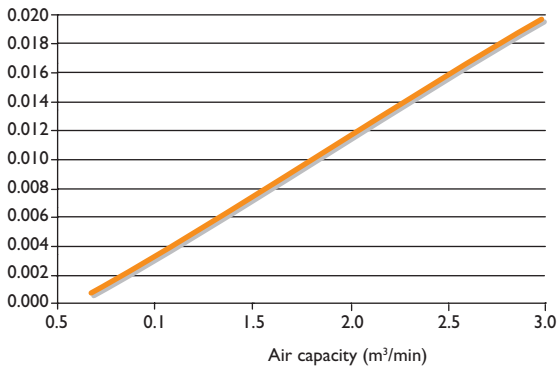
Male rotor size: 281 mm



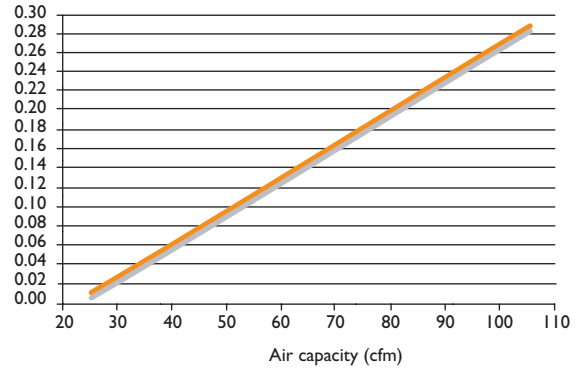
VALVES SCV30



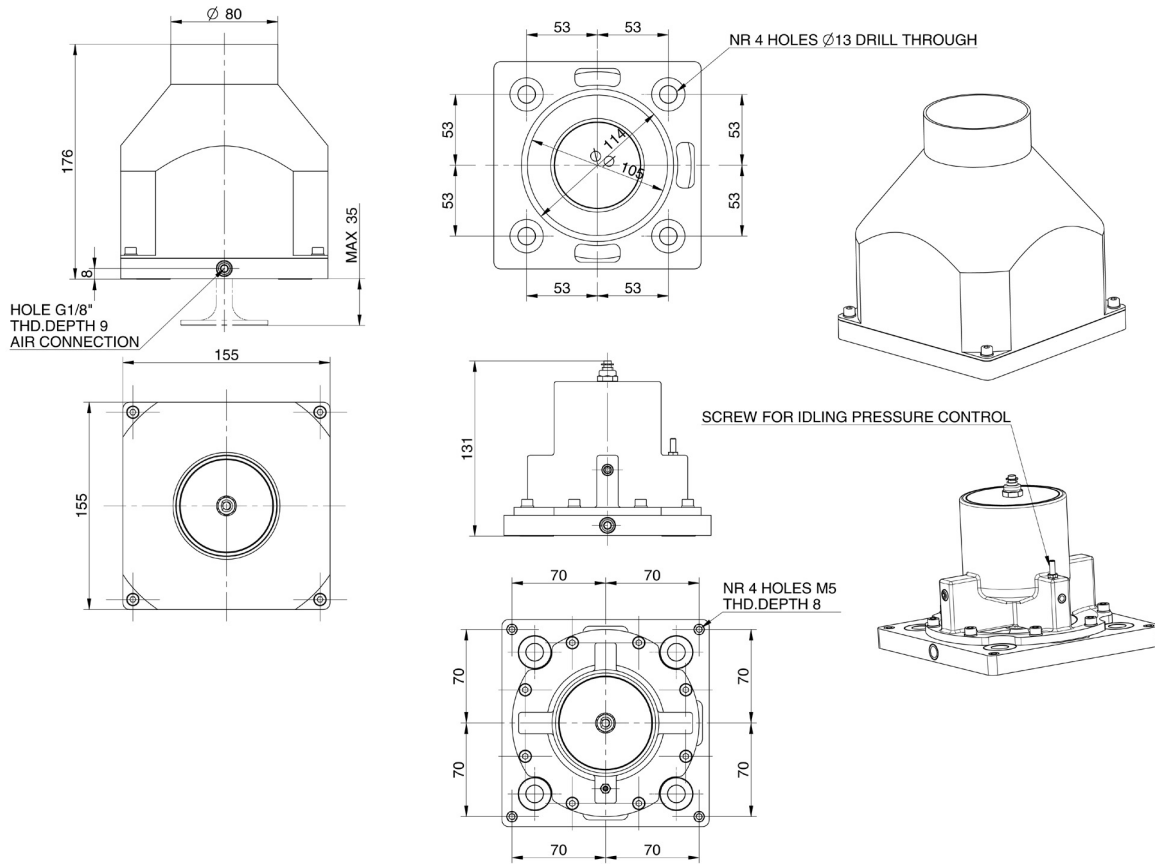
Pressure drop (bar)



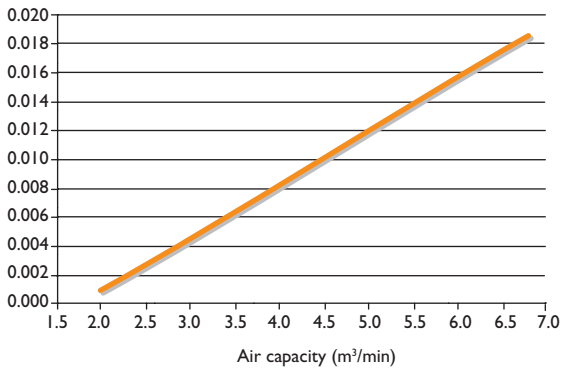
Pressure drop (psi)



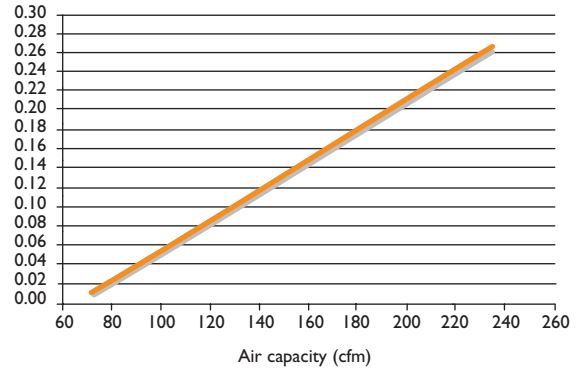
Idling pressure control range



Pressure drop (bar)



Pressure drop (psi)



Idling pressure control range

Behsan
PUMP & MOTOR

کمپرسور بهسان

کارخانه : کیلومتر ۱۷ جاده قدیم کرج ، کمر بندی شهریار

اندیشه شهرک صنعتی زاگرس، خیابان صنعت، پلاک ۵

تلفن : ۰۲۱ ۴۶۸ ۵۳ ۱۱۱-۳ فاکس : ۰۲۱ ۴۶۸ ۵۳ ۱۱۴

www.Behsanair.com

Ebrahimi@behsanair.com



TM. C. S.p.A. Termomeccanica Compressori

Via del Molo 3

19126 La Spezia (Italy)

Tel. ++39-0187-552489

Fax ++39-0187-552464

www.termomeccanica.com